

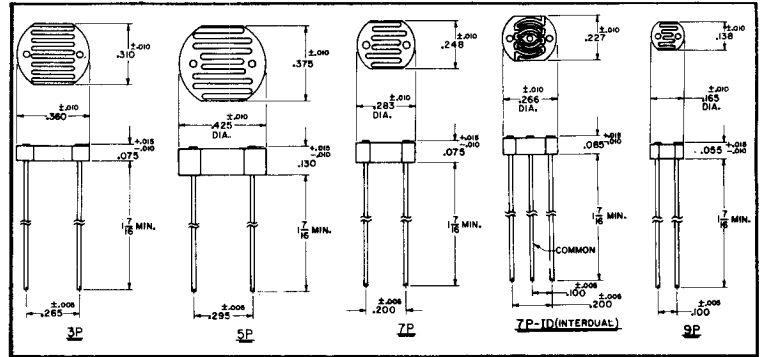
24 Types

Resistance Tolerance @ 2 ft. -C $\pm 33\frac{1}{3}\%$

6 Photoconductive Materials

Temperature Range: -25°C to $+75^{\circ}\text{C}$

Maximum Power: 3P — 125mw
 5P — 250mw
 7P — 125mw
 9P — 50mw



TYPE	Sensitive Material	Peak Spectral Response (Angstroms)	Resistance @ 2 ft-c (Ohms)	Min. Dark Resistance 5 sec. After 2 ft-c	Maximum Voltage Rating (Peak A.C.)	Measurement Voltage
CL5P4	CdSe Type 4	6900	2.7K	720K	250V	10V
CL7P4			54K	14.4 Meg	300V	20V
CL5P4L			.45K	120K	170V	1.35V
CL7P4L			1.0K	268K	170V	4.0V
CL9P4L			2.0K	520K	100V	8.0V
CL5P5	CdS Type 5	5500	9.0K	450K	250V	12V
CL5P5M			6.0K	400K	250V	10V
CL7P5			166K	8.3 Meg	300V	100V
CL9P5			166K	11 Meg	250V	35V
CL5P5L			1.5K	75K	170V	10V
CL7P5L			3.3K	165K	170V	10V
CL9P5L			10K	670K	100V	10V
CL7P5HL			CdS Type 5H	5500	28K	14 Meg
CL7P5HL-ID	24K*	14 Meg			100V	10V
CL9P5HL	100K	67 Meg			100V	40V
CL3P7L	CdS Type 7	6150	1.2K	80K	100V	4.0V
CL7P7HL	CdS Type 7H	6200	10K	6.7 Meg	170V	8.0V
CL7P7HM			30K	20 Meg	400V	16V
CL9P7HL			24K	16 Meg	100V	16V
CL9P7HLL			4.5K	3.0 Meg	70V	4.0V
CL5P9M			CdS Type 9	5500	9.0K	6.0 Meg
CL7P9L	28K	18.7 Meg			170V	10V
CL9P9L	100K	67 Meg			100V	10V
CL9P9LL	15K	10 Meg			70V	10V

*Dual Element Cell matched to $\leq 20\%$

MEASUREMENT DATA • All measurements at 2854°K • Cells light adapted 16 hrs. at 30 ft—c prior to test
 • Measurement voltage is D.C. applied voltage for measuring resistance • All readings made at 25 °C ambient.

