

## Automotive Diagnosis Oscilloscope

8 Channels, 100KHz, 2.4MSa/s

**Hantek1008B**



## Feature

- Highly efficient and cost-effective;
- 8 channels oscilloscope for vehicle testing;
- 2.4MSa/s real time sampling rate, 12bit vertical resolution;
- 8 channels programmable generator which can analog signals of crankshaft, camshaft etc.

### 1) Vehicle Testing

- First Diagnosis: Intake manifold vacuum & ignition, Petrol fumes adjusting valve vacuum & ignition, Idle exhaust ignition, Starting exhaust ignition
- Ignition: primary and secondary
- Sensor: Air Flow Meter, Camshaft, Crankshaft, Distributor, Lambda sensor, Throttle position
- Bus Diagnosis: CAN bus data examine, CAN bus signal integrity, CAN bus LH long time acquisition, LIN bus
- Performer: Petrol/Diesel
- Starter and charging circuits

### 2) Oscilloscope

- 8 channels oscilloscope, 2.4MSa/s real time sampling rate
- 12 bits vertical resolution, spectrum analysis function

### 3) Programmable Generator

- 8 channels programmable generator
- Can analog signals of crankshaft, camshaft etc.

### 4) Others

- USB 2.0 interface plug and play, and no need extra power supply;
- More than 20 types of automatic testing function, a similar interface with benchtop oscilloscope, easy to use;
- Software support: Windows NT, Window 2000, Windows XP, VISTA, Windows 7, Windows 8, Windows 10.

# Benefits

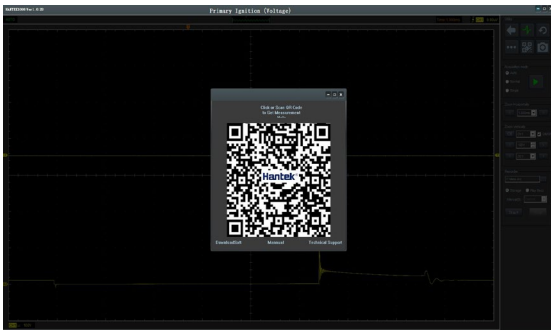
### Vehicle Testing Photo



### Function Selection Interface



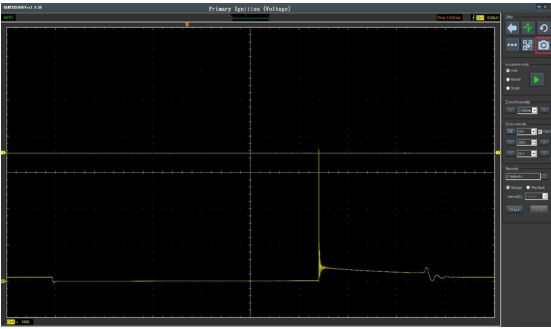
### Callout the quick guide column with one button



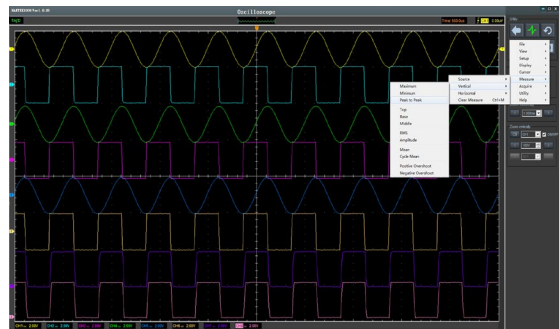
### Vehicle Diagnosis Interface



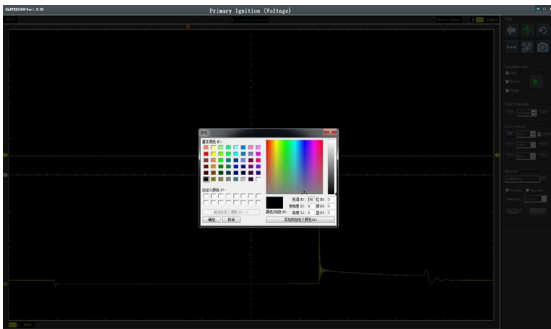
### Reference Waveforms



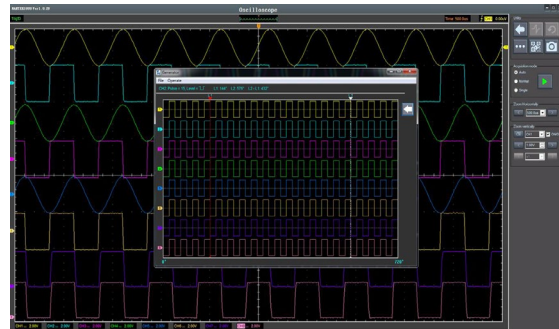
### 8 Channels Waveforms



### Selectable Color and Lightness



### Signal Generator








**Accessories Kit**



**HANTEK1008B**

Kit Content: 1pc 8 channels USB Oscilloscope+ 1pc Toolbag + 1pc carton box +Automobile Diagnosis  
Accessories: 8pcs Test Leads with BNC plug and alligator clip HT324,1pc USB cable, 1pc CD.

## Accessories List in Hantek1008B

| Picture  | Description | Picture  | Description  |
|--|-------------|--|--|
|   | USB Cable   |  | HT324<br>Test Leads with BNC Plug and Alligator Clip |
|   | CD          |  | Toolbag  |
|  | Carton Box  |  |  |

## Specification

**Model** Hantek1008B

### OSCILLOSCOPE MODE

#### Vertical System

|                   |                         |
|-------------------|-------------------------|
| Analog Channel    | 8                       |
| Input Impedance   | Resistance: 1M $\Omega$ |
| Input Sensitivity | 10mV/div to 5V/div      |
| Input Coupling    | DC                      |
| Resolution        | 12 bits                 |

#### Horizontal System

|              |                   |
|--------------|-------------------|
| Memory Depth | 4K                |
| Max. Input   | 400V (DC+AC Peak) |

|                                    |  |
|------------------------------------|--|
| Real-Time Sampling Rate            | 2.4MSa/s   |
| Time Base Range                    | 1ns/div to 20000s/div(1-2-5sequences)  |
| Time Base Precision                | ±50ppm   |
| <b>Trigger System</b>              |  |
| Time Base Range                    | 1ns/div to 20000s/div(1-2-5sequences)  |
| Time Base Precision                | ±50ppm   |
| Trigger Source                     | CH1, CH2,CH3,CH4, CH5, CH6,CH7,CH8   |
| Trigger Mode                       | Edge   |
| <b>X-Y Mode</b>                    |  |
| X-Axis Input                       | CH1  |
| Y-Axis Input                       | CH2  |
| <b>Cursors and Measurement</b>     |  |
| Voltage Measurement                | Vpp, Vamp, Vmax, Vmin, Vtop, Vmid, Vbase, Vavg, Vrms, Vcrms, Preshoot, Overshoot   |
| Time Measurement                   | Frequency, Period, Rise Time, Fall Time, Positive Width, Negative Width, Duty Cycle  |
| Cursors Measurement                | Horizontal ,Vertical, Track, Auto Measure Modes  |
| Waveform Signal Process            | +, - , x, ÷, FFT, Invert   |
| Voltage Range                      | 10mV to 5V/div @ x 1 probe<br>100mV to 50V/div @ x 10 probe<br>10V to 5000V/div @ x 1000 probe<br>100V to 50000V/div @ x 10000 probe<br>200mV to 100V/div @ 20:1             |
| Current Range                      | 100mA to 50.0A/div @ CC65(20A)<br>1000mA to 500.0A/div @ CC65(65A)<br>1A to 100.0A/div @ CC650(60A)<br>1A to 200.0A/div @ CC1100(100A)<br>10A to 2000.0A/div @ CC1100(1100A) |
| FFT                                | Rectangular, Hanning, Hamming, Blackman Window   |
| Math                               | Addition, subtraction, multiplication, division  |
| <b>PROGRAMMABLE GENERATOR MODE</b> |  |
| Channel                            | 8  |
| Output Level                       | LVTTTL   |
| Frequency Range                    | 0-250kHz   |
| Interface                          | USB 2.0(Full Speed)  |
| Power                              | No need extra power supply   |
| Size & Weight                      | 185 x 150 x 27 (mm); 0.35kg  |