

ENCAPSULATED
REED RELAY

GENERAL INFORMATION

The JRE comes in a variety of contact forms from 1A to 2 True C in dry or mercury wetted reed construction. Mounting height is 0.360", allowing PC board spacing on 0.6" centers. The relay is completely sealed in a molded epoxy package and will withstand cleaning by immersion in any of the popular P.C. cleaning systems. This construction is especially suitable for automatic waste solder equipment.

The JRE has PC board termination on a 1.0" X .100" grid. It may be supplied with an internal resistor or diode for suppression of voltage transients. The JRE is for use in such application as office machines, logic and process control, automotive electronics, climate control systems, communications circuits, antitheft and safety circuits, remote control sensing, and other applications where miniature dry and mercury wetted relays are required.

ENGINEERING DATA

Contacts Materials: Rhodium or mercury

Form A or Form B

Dry: 10W @ 200V DC max.; 0.5 amp DC max. 10V A @ 140V AC max.; 0.35 amp AC max.

Wetted: 50W @ 1000V DC max.; 1.0 amp DC max. 50V A @ 140V AC max.; 0.6 amp AC max.

Form C

Dry: 3W or 3V A max.; 125 amp @ 28V DC max.; .09 amp AC max. Wetted: 50W @ 1000V DC max.; 1.0 amp DC max. 50V A @ 140V AC max.; 0.6 amp AC max.

Initial Contact Resistance:**Form A or B**

Dry 0.15 ohm max.

Wetted 0.05 ohm max.

Form C

Dry 0.2 ohm max.

Wetted 0.05 ohm max.

Dielectric**Form A or B**

Open Contacts—Dry 275V rms 60 hz min.

Wetted 1500V rms 60 hz min.

Form C

Open Contacts—Dry 150V rms 60 hz min.

Wetted 1500V rms 60 hz min.

All other points all forms 500V rms 60 hz

Coil:

Voltage—5, 6, 12, 15, 24 DC (other voltages available on order)

Power—75 watt max. 0.75 wd package 0.114 watt min. 0.310" wd package. Down to 50mw sensitivity compatible w/TTL & CMOS

Pickup—75% or less of nominal voltage @ 25°C

Dropout—10% or more of nominal voltage @ 25°C

Operate Time @ 25°C (include bounce on closure; no bounce on opening or mercury wetted)

	Pickup in ms	Dropout in ms
1 Form A—Dry	1.0	0.5
	Wetted	2.0
2 Form A—Dry	1.5	1.0
	Wetted	2.0
3 Form A—Dry	2.0	1.5
4 Form A—Dry	2.5	2.0
1 Form B—Dry	0.5	1.0
	Wetted	1.0
2 Form B—Dry	1.0	1.5
	Wetted	1.5
1 Form C—Dry	1.5	1.5
	Wetted	2.0
2 Form C—Dry	2.5	2.5
	Wetted	2.5
1A & 1B—Dry	1.0	1.0
	Wetted	1.5

Insulation Resistance: 1,000 megohms @ 100 VDC.

GENERAL

Pin Termination: .020"/.030" dia.

Pin Spacing: 1.00" x 0.100" grid.

ORDERING INFORMATION

	JRE	1	D	A	1	12
①	JRE Molded Epoxy .100" X 1.00 grid					
②	Contact arrangement 1-1A 2-1B 5-1C 7-2A 8-2B 12-3A 14-3C 15-4A 16-4B 21-6A 50-1A&1B 60-2A&2B 61-2A&1C 71-2A&2C					
③	Coil termination D,E,F					
④	Case size A-310 B-400 C-550 D-750					
⑤	Contact rating 1. 10W or 10VA (A), (B), and (A&B) 2. 3W or 3VA (C) 3. 10W or 10VA (A) and 3W or 3VA (C) 4. 50W or 50VA (AB), (B), (C)					
⑥	Coil voltage 3,6,9,12,15,24,48 or as specified					

Note: 1 Single & dual coil latching available.

2 Relays with contact rating 4 (Mercury Wetted) must be mounted within $\pm 30^\circ$ of vertical. Relay mounting will contain an arrow indicating up position.

Case sizes for contact rating 4:

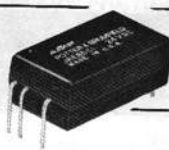
1A	.400" wetted	2B	.550" wetted
2A	.550" wetted	1C	.400" wetted
1A&1B	.550" wetted	2C	.550" wetted
1B	.400" wetted		



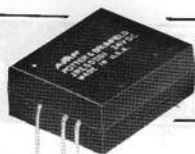
.400 PACKAGE WIDTH



.310 PACKAGE WIDTH



.550 PACKAGE WIDTH



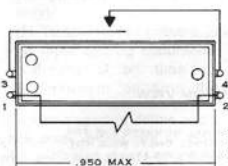
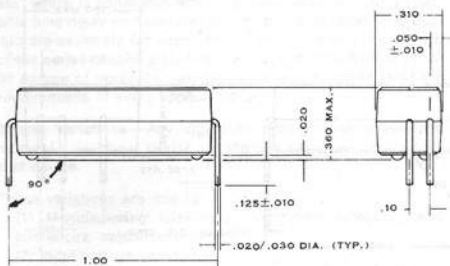
.750 PACKAGE WIDTH

JRE SELECTION CHART

Relay Type	Contact Form	Contact Rating	Nom. Coil VDC	Coil Resistance $\pm 10\%$ (Ohms @ 25°C)	Nominal Coil Current in mA	Nominal Coil Power in mW	Max. Package Width
JRE1DA1	1A	10 VA	5	200	25	125	.310"
			6	200	30	180	
			12	1200	10	120	
			15	1200	12.5	188	
			24	4000	6	144	
JRE7DB1	2A	10 VA	5	120	42	210	.400"
			6	120	50	300	
			12	500	24	288	
			15	900	17	250	
			24	2000	12	288	
JRE12DC1	3A	10 VA	5	85	59	294	.550"
			6	85	71	424	
			12	330	36	436	
			15	500	30	450	
			24	1300	18	432	
JRE15DD1	4A	10 VA	5	30	166	833	.750"
			6	50	120	720	
			12	200	60	720	
			15	300	50	750	
			24	900	27	647	
JRE2DB1	1B	10 VA	5	200	25	125	.400"
			6	200	30	180	
			12	900	14	168	
			15	1400	11	165	
			24	3600	7	160	
JRE8DC1	2B	10 VA	5	85	59	294	.550"
			6	85	71	424	
			12	330	36	436	
			15	500	30	450	
			24	1300	18	432	
JRE5DB2	1C	3VA	5	120	43	215	.400"
			6	180	33	200	
			12	800	15	180	
			15	1200	12	180	
			24	3000	8	190	
JRE5ODC1*	1A + 1B	10 VA	5	50	100	500	.550"
			6	85	71	424	
			12	330	36	436	
			15	500	30	450	
			24	1300	18	432	

*For break-before-make (Form C action), consult factory.

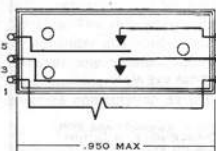
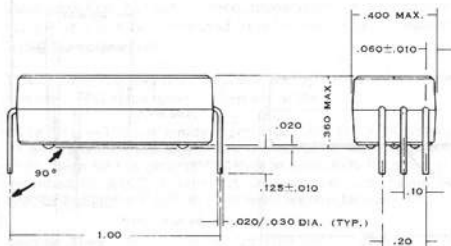
JRE1DA1 .310 PACKAGE WIDTH
1 FORM A



BOTTOM VIEW

TERMINAL NUMBERS ARE FOR REFERENCE ONLY. WILL NOT APPEAR ON RELAY.

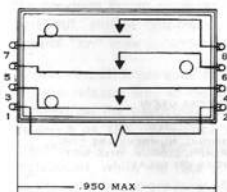
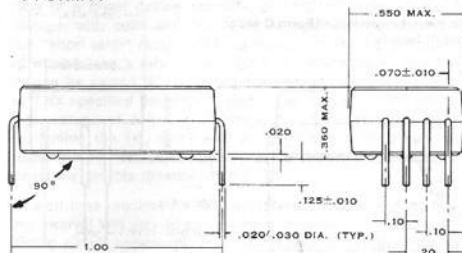
JRE7DB1 .400 PACKAGE WIDTH
2 FORM A



BOTTOM VIEW

TERMINAL NUMBERS ARE FOR REFERENCE ONLY. WILL NOT APPEAR ON RELAY.

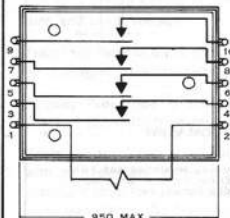
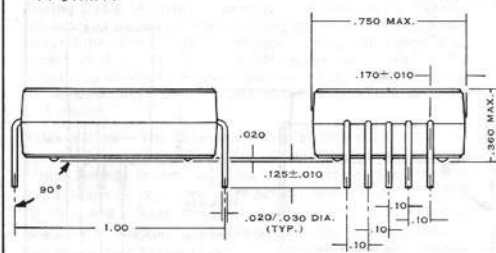
JRE12DC1 .550 PACKAGE WIDTH
3 FORM A



BOTTOM VIEW

TERMINAL NUMBERS ARE FOR REFERENCE ONLY. WILL NOT APPEAR ON RELAY.

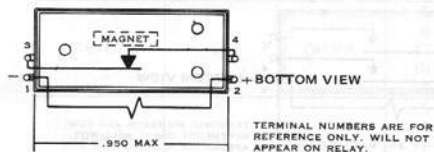
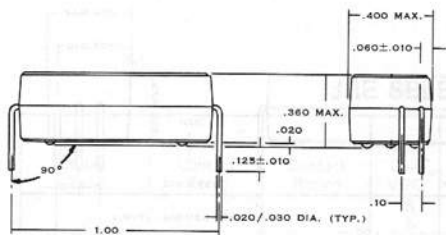
JRE15DD1 .750 PACKAGE WIDTH
4 FORM A



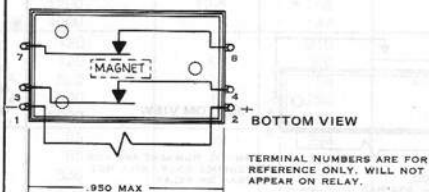
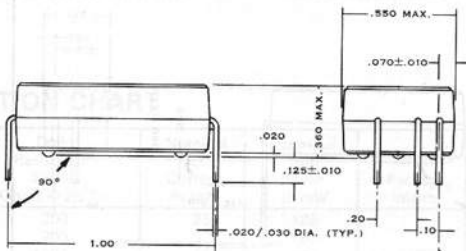
BOTTOM VIEW

TERMINAL NUMBERS ARE FOR REFERENCE ONLY. WILL NOT APPEAR ON RELAY.

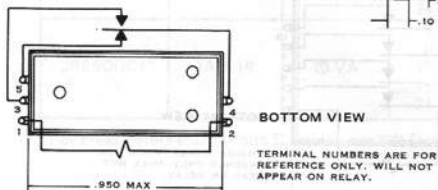
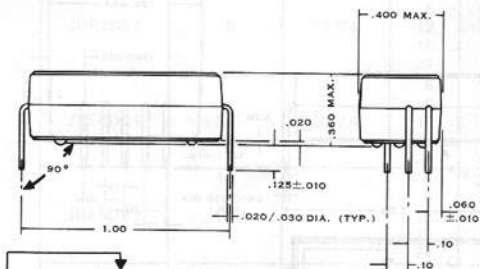
JRE2DB1 .400 PACKAGE WIDTH
1 FORM B



JRE8DC1 .550 PACKAGE WIDTH
2 FORM B



JRE5DB2 .400 PACKAGE WIDTH
1 FORM C



JRE50DC1* .550 PACKAGE WIDTH
1 FORM A + 1 FORM B

*For break-before-make (Form C action), consult factory.

